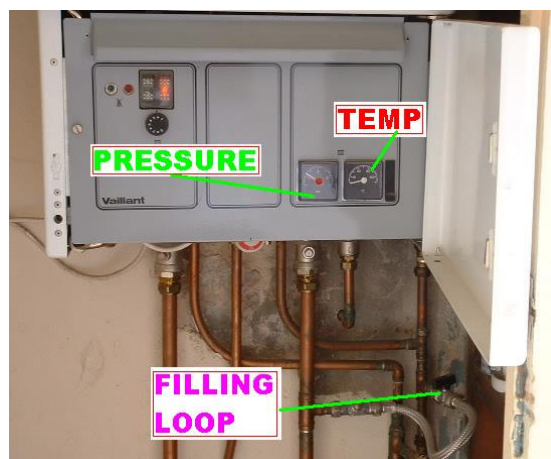


Instructions for loss of pressure.

A hot water and heating system basically takes cold water from your mains and sends it to the boiler to be the pressurized this in turn will give you hot water and heating. 8 out of 10 heating issues can be resolved using the below techniques.

- Check gauge on front of boiler – If the reading is below 1 or in the red zone then you need to re-pressurise your system.
- Turn off your boiler!
- Refer to your boiler user manual or the picture below to locate the pressure release valves.
- Turn both valves clockwise until you see the pressure gauge go up to approx 2. Turn the valves back to the start position.
- Take a radiator key (or in some cases a flat headed screwdriver) turn the key or screwdriver gently until water seeps out of the small hole, immediately close the tap. This will have to be done on all radiators including the bathroom towel rail. (This is usually found on the top)
- Turn your boiler back on and the pressure should return back to normal (Middle of the gauge – between 1 and 2)
- If this does not solve the problem please call our maintenance department and we hope to solve the problem over the phone.



(Note: This boiler may not be exactly the same as yours)

Please note: If you don't have a radiator key they can be found in most hardware stores for approx £1.00